

STERLING CRANE

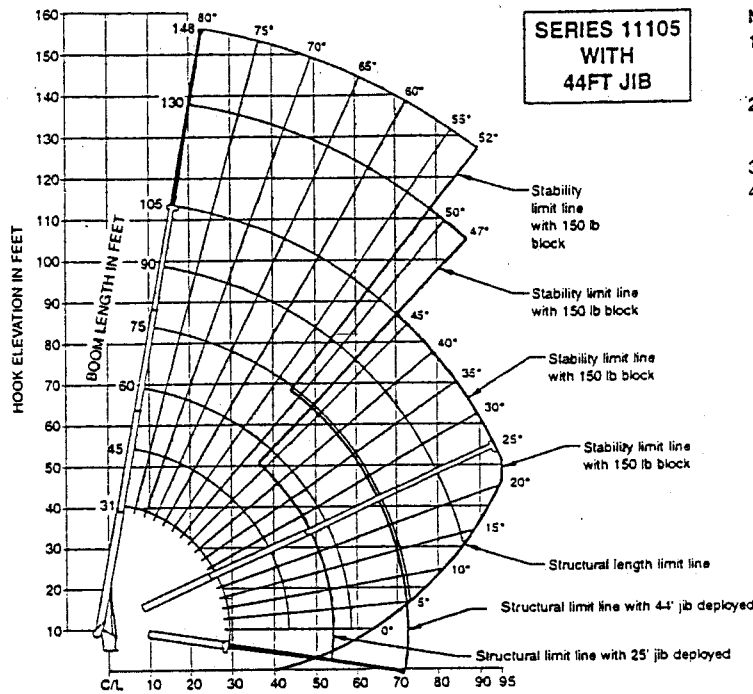


LIFTING CHARTS - Boom Trucks

NATIONAL MODEL 11105 - 28 TON CAPACITY

877532

NATIONAL CRANE CORPORATION



- NOTE:**
1. Operate with jib by radius when main boom is fully extended. If necessary increase boom angle to maintain loaded radius.
 2. Operate with jib by boom angle when main boom is not fully extended. Do not exceed rated jib capacities at any reduced boom lengths.
 3. Capacities do not exceed 85% stability.
 4. Shaded areas are structurally limited capacities.

LMI OPERATING CODE SWITCH	
SWITCH POSITION (REF #17)	OPERATING MODE
01	MAIN BOOM - NO JIB STOWED
02	MAIN BOOM - JIB STOWED
03	25 FT TELE JIB
04	44 FT TELE JIB
11	MAN BASKET ON MAIN BOOM
12	MAN BASKET ON 25 FT TELE JIB
13	MAN BASKET ON 44 FT TELE JIB

Operating radius from C/L rotation in feet with unloaded boom

DO NOT MOVE UNLOADED BOOM BEYOND LIMIT LINE

LOAD RATINGS

LOAD RADIUS (FEET)	LOADED BOOM ANGLE	31FT BOOM (lb)	LOADED BOOM ANGLE	45FT BOOM (lb)	LOADED BOOM ANGLE	60FT BOOM (lb)	LOADED BOOM ANGLE	75FT BOOM (lb)	LOADED BOOM ANGLE	90FT BOOM (lb)	LOADED BOOM ANGLE	105FT BOOM (lb)
5	79.4	53,900										
8	73.1	37,550	79.3	29,400								
10	68.9	30,950	76.8	28,500								
12	64.6	26,450	74	24,200	78.8	21,850						
14	60.2	22,850	71.2	21,100	76.8	19,050	80	15,050				
16	55.6	20,150	68.4	18,600	74.8	16,850	78.5	14,650				
20	45.5	15,850	62.6	15,000	70.7	13,850	75.4	12,250	78.4	10,500	80.2	7,450
25	29.1	11,350	54.8	11,900	65.4	10,850	71.3	9,850	75.1	8,700	77.8	7,050
30			46.3	9,600	59.8	8,950	67.1	8,150	71.8	7,500	75	6,250
35			36.1	7,600	53.9	7,500	63.1	6,700	68.6	6,200	72.2	5,450
40			23.5	5,500	48	6,150	58.6	5,750	65	5,250	69.3	4,750
45					40.8	5,100	53.8	4,900	61.3	4,500	66.2	4,050
50					32.2	4,100	48.7	4,200	57.5	3,900	63.1	3,550
55					20.6	2,850	43	3,550	53.5	3,400	60	3,150
60							36.7	2,900	49.2	2,900	56.6	2,700
65							29.1	2,300	44.6	2,450	53.2	2,400
70							18.7	1,450	39.4	1,900	49.5	2,050
75									33.6	1,500	45.5	1,600
80									26.8	1,100	41.2	1,200
85									17.2	500	36.5	900
90											31.2	600
95											24.8	350
0		4,350	0	1,800	0	450						
ADD TO CAPACITIES WHEN NO JIB STOWED (lb)		850		600		450		350		300		250

LOAD RADIUS (FEET)	LOADED BOOM ANGLE	25FT JIB (lb)	LOADED BOOM ANGLE	44FT JIB (lb)
30	78.3	4,200		
35	76.2	3,800	78.2	2,400
40	74	3,400	76.4	2,250
45	71.7	2,900	74.7	2,150
50	69.4	2,500	72.8	2,000
55	66.9	2,100	70.8	1,800
60	64.5	1,800	68.9	1,650
65	61.9	1,500	66.8	1,450
70	59.4	1,300	64.6	1,300
75	56.7	1,100	62.4	1,100
80	53.9	900	60	900
85	51	700	57.8	800
90	47.9	500	55.4	700
95			52.9	550

LOADLINE EQUIPMENT DEDUCT (lb)

- Downhaul weight _____ 150
- One sheave block _____ 305
- Two sheave block _____ 355
- Three sheave block _____ 575

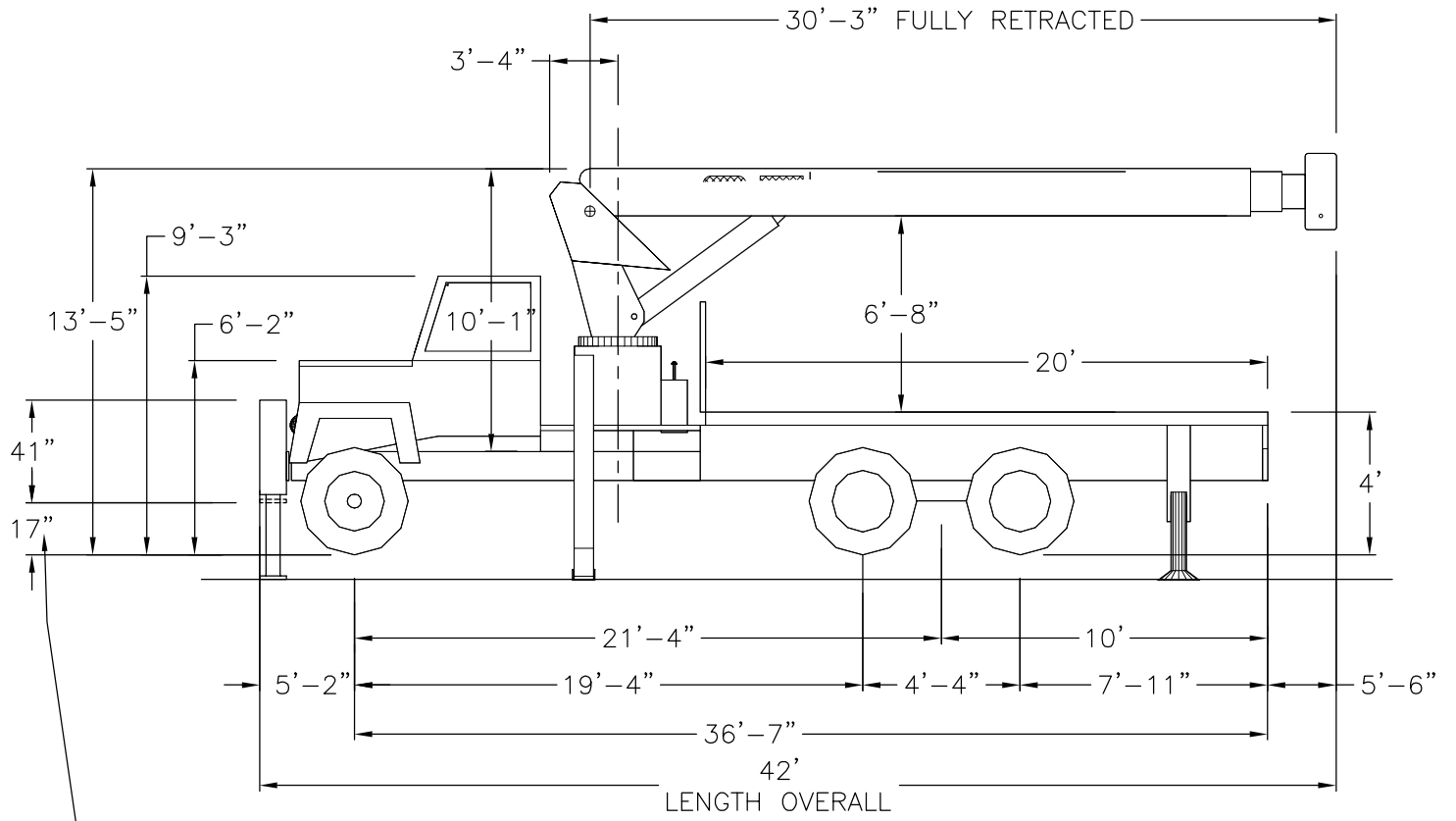
1 PART LINE	2 PART LINE	3 PART LINE	4 PART LINE	5 PART LINE	6 PART LINE	7 PART LINE
MAX. PULL 7,700 LBS	MAX. PULL 15,400 LBS	MAX. PULL 23,100 LBS	MAX. PULL 30,800 LBS	MAX. PULL 38,500 LBS	MAX. PULL 46,200 LBS	MAX. PULL 53,900 LBS

NOTICE

- Do not deadhead line block against boom tip when extending boom.
- Keep at least 3 wraps of loadline on drum at all times.
- Use only 9/16" diameter rotation resistant cable with 38,500 lbs breaking strength on this machine.
- Maximum capacity with "burst of speed" is 3,000 lbs.

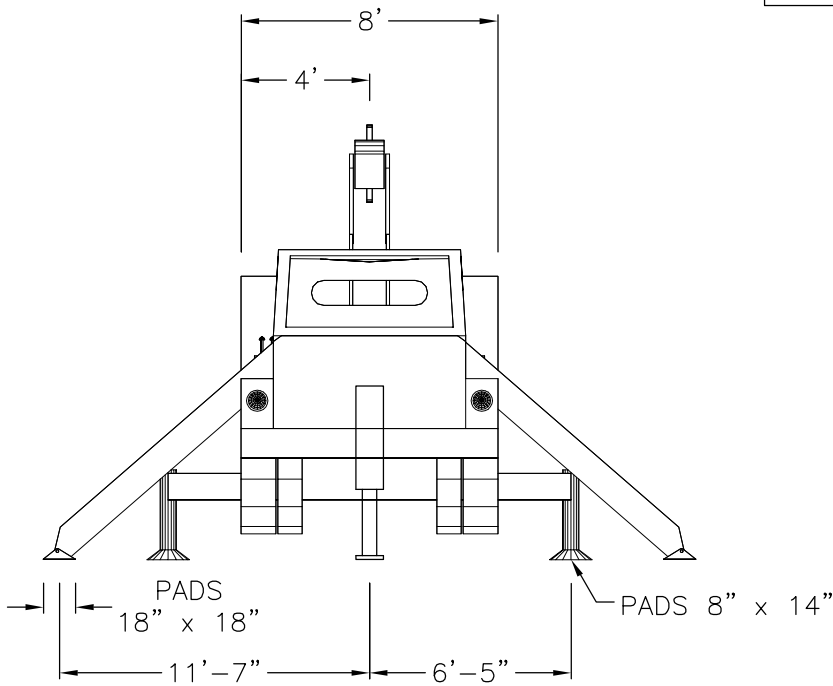
* 56,000 LBS LOAD REQUIRES OPTIONAL 9/16" DIAMETER 6x25 IWRC CABLE

STERLING CRANE



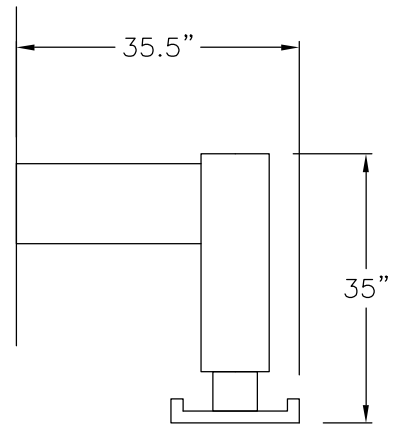
ADJUST MANUALLY
17'-8"

BOOM TRUCK =	OVERHANG	DECK
28-7-1315	N/A	20'



FRONT STABILIZER

REAR STABILIZER



REAR STABILIZER
25 1/2 STROKE