



TRANSPORTATION SPECS - Crawler Cranes

DEMAG MODEL CC 2500 - 500 TON CAPACITY

<u>COMPONENT WEIGHTS</u>	<u>LBS.</u>	<u>KGS.</u>	<u>MAIN BOOM 60' TO 276' OR 18M TO 84M</u>	<u>LBS</u>	<u>KGS</u>
Complete Crane C/W 84m Boom, 140t Main Cwt, 30t Ballast	783,604	355 440	<u>OD (Tubular) 9'9" X 8'</u>		
Superstructure Complete (44' x 10' x 6'9")	91,520	41 600	Butt Section 10m c/w Winches	40,700	18 500
Carbody c/w Jacks (23'9" x 9'11" x 4'4")	56,900	25 900	Insert 6m, 2 Pcs. Each	6,512	2 960
Crawler #1 (36'2" x 4'11" x 4'11")	68,200	31 000	Insert 12 m, 4 Pcs. Each	12,144	5 520
Crawler #2 (36'2" x 4'11" x 4'11")	68,200	31 000	Insert 12m Reducer	11,484	5 220
			Tip Section, 2m	11,000	5 000
			Note With Transport Beams 10'3" wide		
<u>COUNTERWEIGHT</u>			<u>SUPERLIFT MAST 98' OR 30M</u>		
140t of Main Cwts.			<u>OD (TUBULAR) 9'6" X 8'2"</u>		
1 – Base Cwt. (22' x 7'10" x 8')	44,000	20 000	Mast Butt Section 6m	16,500	7 500
12 – 10t Cwts. (7'11" x 5'11" x 1'10") each	22,000	10 000	Insert 12m	7,700	3 500
30t of Carbody Cwts.			Tip Section 12m	16,720	7 600
2 – 15t cwts. (7'11" x 5'11" x 1'10") each	33,000	15 000			
250t of Superlift Counterweights			<u>LUFFING JIB 79' TO 276' OR 24M TO 84M</u>		
1 – Counterweight Carrier (30'10" x 9'9" x 11'2")	105,000	47 727	<u>OD (TUBULAR) 8'3" X 6'5"</u>		
23 – 10t cwts. Each	22,000	10 000	Butt Section 5m	5,730	2 605
<u>ADDITIONAL INFORMATION</u>			Insert 6m, 2 pcs. each	3,860	1 750
Hook Block 2 x 200t (2 x 7 sheave)	16,556	7 510	Insert 12m, 2 pcs. each	6,666	3 030
Hook Block, 100t, 3 sheave	7,700	3 500	Insert 12m, 3 pcs. each	7,410	3 360
Hook Block, 50t, single sheave	6,160	2 800	Tip Section 7m	8,984	4 080
Ball, 15t	1,980	900	Upper Luffing Mast (49'3" x 5' x 4')	6,600	3 000
Two Superlift Trays (23'11" x 9'8" x 1'8") each	9,020	4 100	Lower Luffing Mast (46' x 8'2" x 5'6")	8,800	4 000
Runner (8'3" x 6'5" x 3")	1,672	760	Luffing Pendants	16.8 lb. /ft.	25 kg/m
Connecting Frame (20' x 9'10" x 4')	6,776	3 080			
H1 Winch (8'3" x 3'10" x 3'10")	9,020	4 100			
H2 Winch (8'3" x 3'10" x 3'10")	9,020	4 100			
Central Ballast Traverse (6'10" x 6 x 2'6")	1,980	900			
Container (19'8" x 7'11" x 7'11')	15,400	7 000			

STERLING CRANE

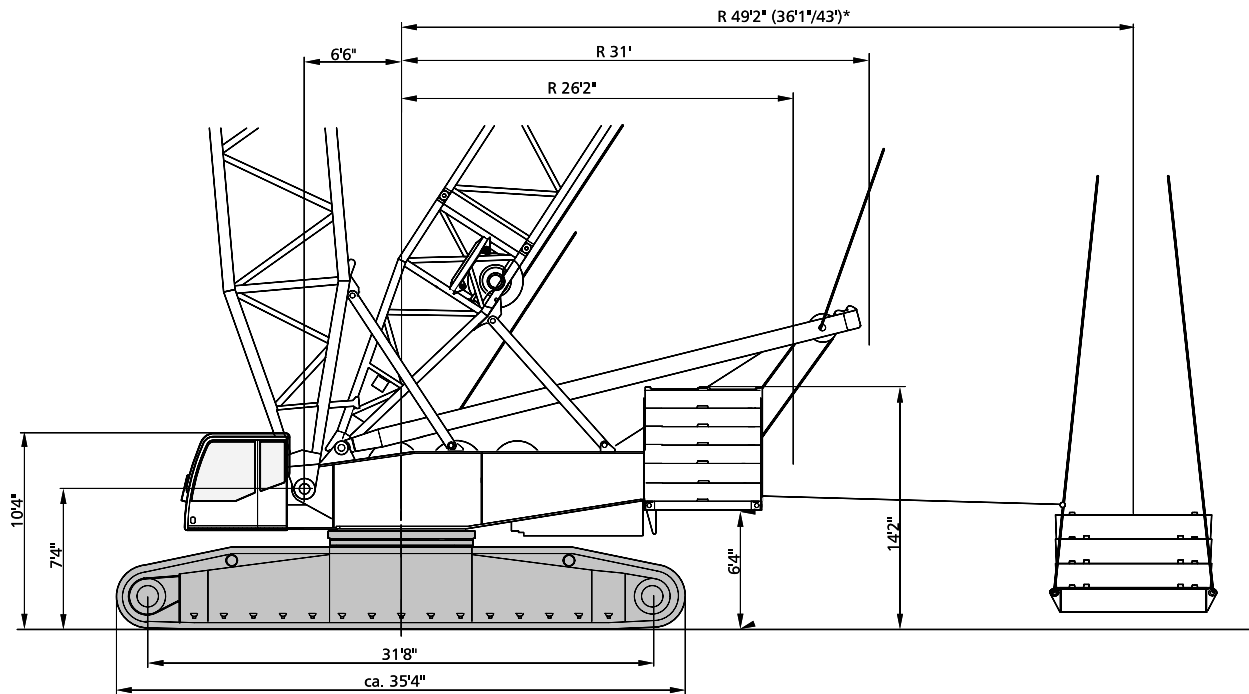
Specifications

Working speeds (infinitely variable)

Mechanisms	Speeds ¹⁾	Single line pull	Length of hoist rope
Hoist 1	max. 495.3 ft	33,650 lb / 30,890 lb ²⁾	2.300 ft
Hoist 2	max. 495.3 ft	33,650 lb / 30,890 lb ²⁾	2.300 ft
Boom derricking	max. 495.3 ft		
Boom hoist	max. 157.5 ft		
Fly jib luffing	max. 495.3 ft		
Slewing (RPM)	1.1		

1) Top layer

2) Without/with reeving effect considered



*optional

STERLING CRANE

Specifications

Hook blocks / Single line hook

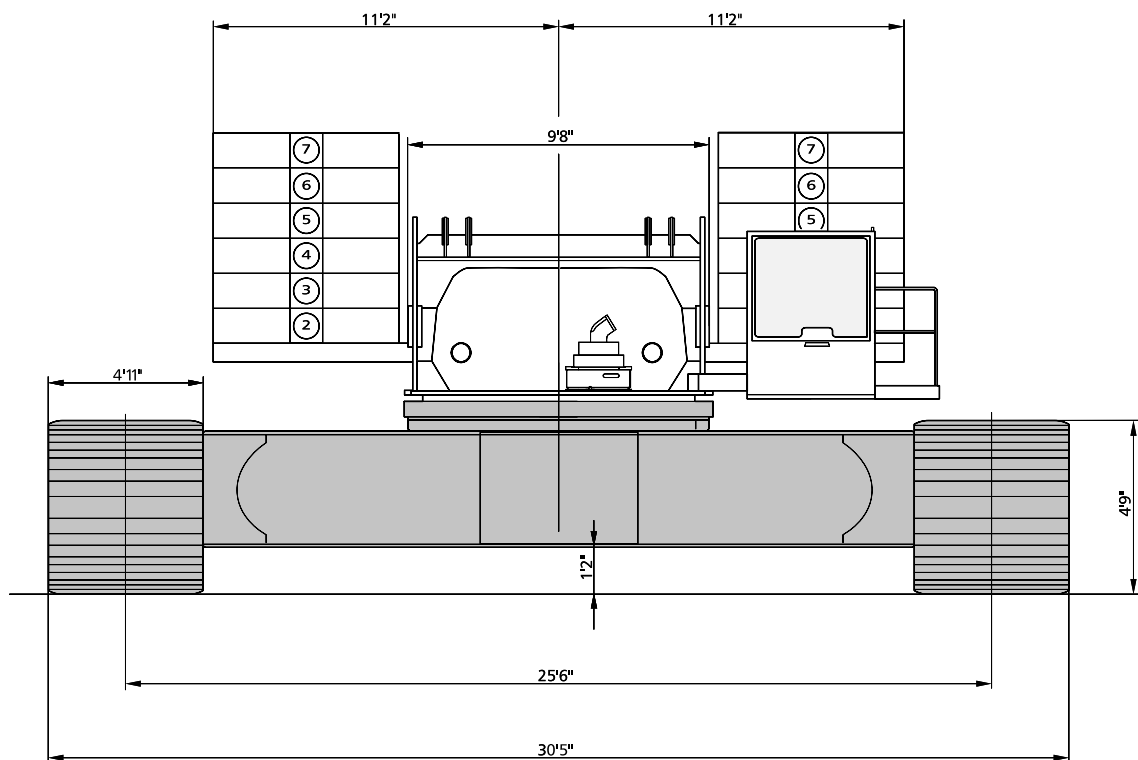
Type	Possible load ¹⁾	Number of sheaves	Number of lines	Weight	„D“
2 x 200 t*	881,800 lb	2 x 7	2 x 15	14,800 lb	16.4 ft
2 x 160 t*	679,000 lb	2 x 5	2 x 11	14,100 lb	15.8 ft
100 t	220,500 lb	3	7	7,500 lb	14.1 ft
50 t	97,000 lb	1	3	3,800 lb	13.1 ft
15 t	33,100 lb	Single line hook	1	1,980 lb	9.8 ft

* The double hook blocks can be converted into single hook blocks.

¹⁾ Varies depending on national regulations

Carrier performance

1 st gear	0-0.75 mph
2 nd gear	0-1.5 mph



STERLING CRANE

Specifications

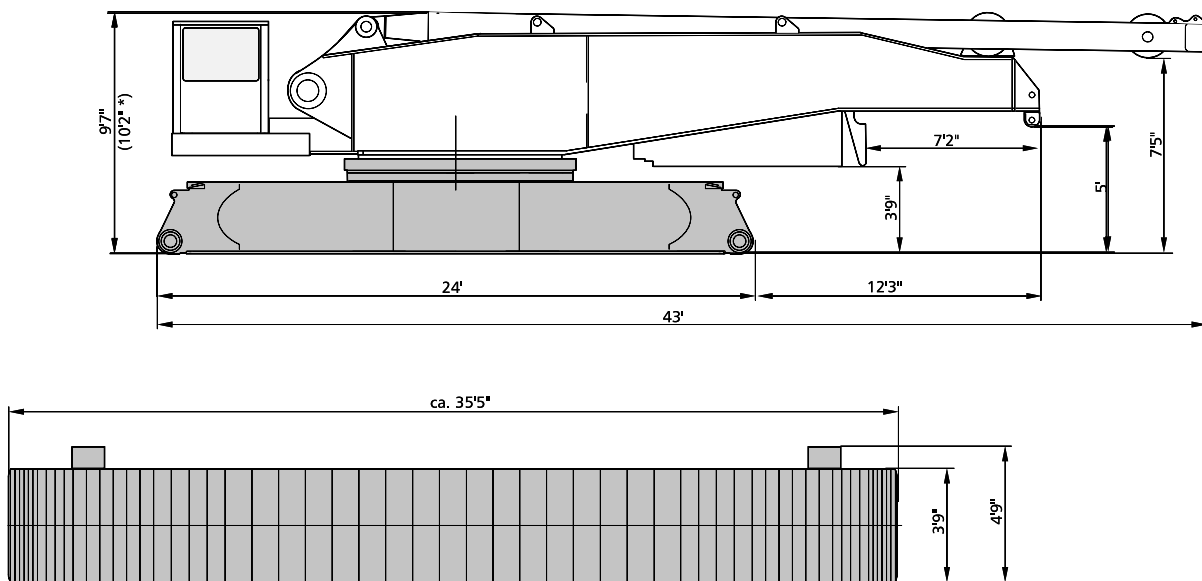
Weights

Total weight incl. counterweight 309,000 lb + 66,000 lb, 78.7 ft SH boom and hook block	617,300 lb
Superstructure (with three drums, A-frame, reeving drum)	90,400 lb
Superstructure (without drums H1/H2, reeving winch) incl. part of quick-connection	72,800 lb
Carbody / Carbody with assembly jacks	37,500 / 41,900 lb
Crawlers	2 x 64,000 lb
Counterweight	309,000 lb
Central ballast	66,000 lb

Ground pressure

Ground pressure, based on 617,300 lb total weight kp/cm ²	1,53
-------------------------------------------------------------------------	------

Transport width = 9.8 ft

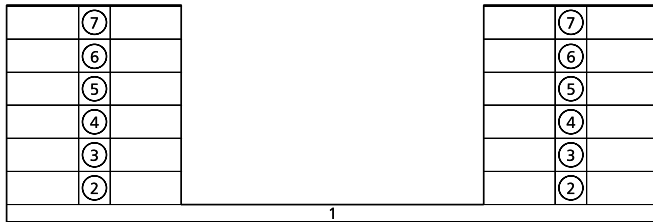


* (with quick connection)

STERLING CRANE

Specifications

Counterweights on upper



Central ballast (CB)

