

# STERLING CRANE



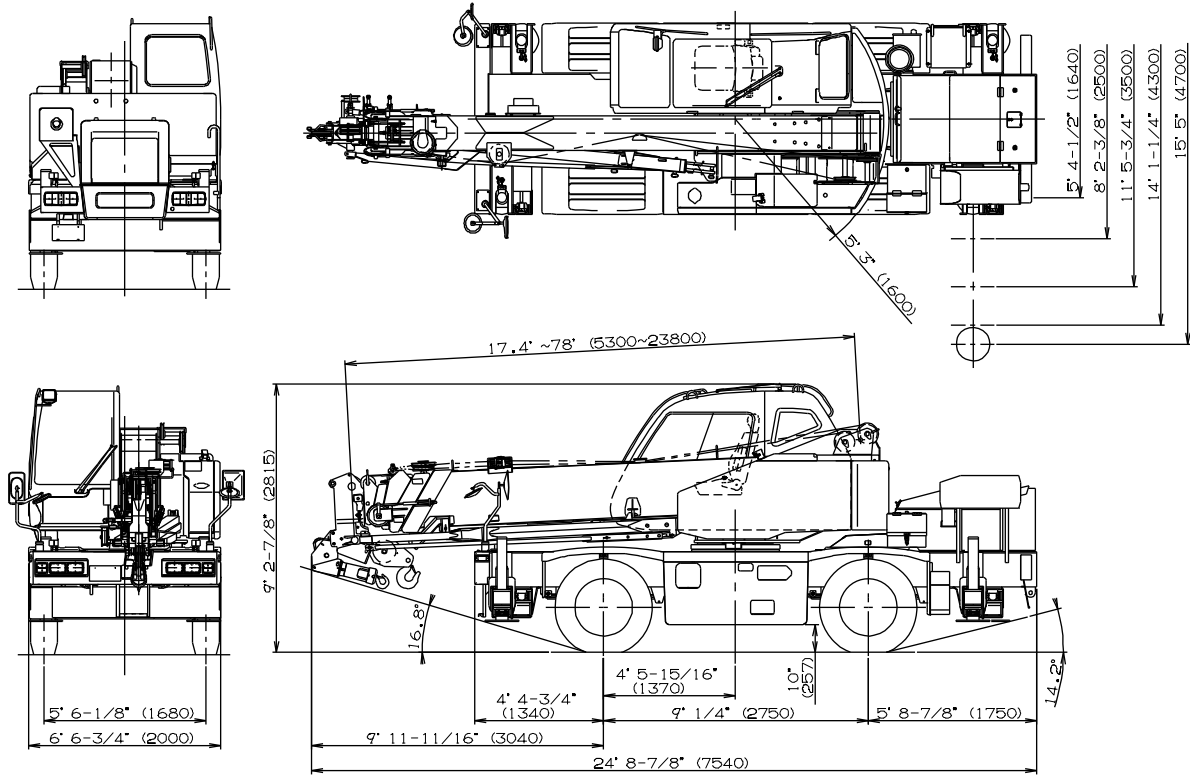
## TRANSPORTATION SPECS - Rough Terrain Cranes

### TADANO MODEL GR150XL-1 - 15 TON CAPACITY

<u>COMPONENT WEIGHTS</u>	<u>LBS.</u>	<u>KGS.</u>
Complete Crane (incl. block, ball & jib)	30 780	13 960
 <b><u>ADDITIONAL INFORMATION</u></b>		
15 Ton Block (4 sheave)	195	88
2 Ton Ball	53	24
Two Stage Jib (11.8'-18')	410	186
Main Load Line (7/16" x 433')		
Auxiliary Hoist Line (7/16" x 217')		
 <b><u>TRANSPORTATION</u></b>		
<b><u>Alberta and Saskatchewan</u></b>	<u>Weight</u>	<u>Trailer</u>
<input type="checkbox"/> Spring	(1)	Tandem
<input type="checkbox"/> Summer & Winter	(1)	Tandem
 <b><u>British Columbia</u></b>		
<input type="checkbox"/> Spring		Tandem
<input type="checkbox"/> Summer & Winter		Tandem

# STERLING CRANE

## DIMENSIONS



## GENERAL DIMENSIONS (275/80R22.5 Tires)

	Feet	Meters
Turning radius		
4 wheel steer	12' 5-5/8"	3.8
2 wheel steer	21' 3-7/8"	6.5
Tail swing of counterweight	5' 3"	1.6

Specifications are subject to change without notice.