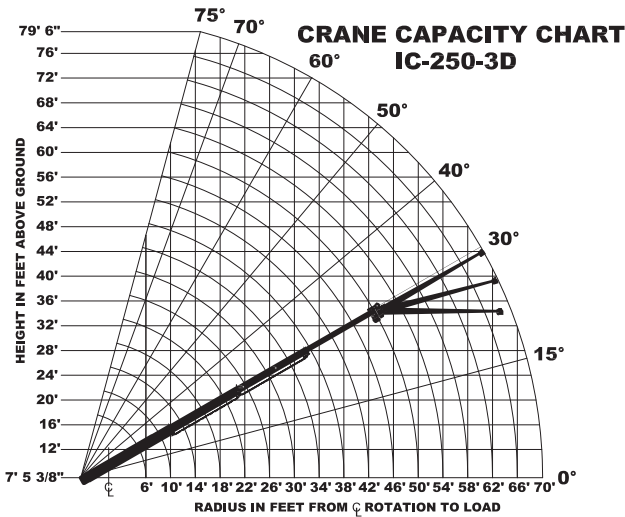
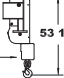
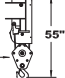


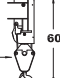
bmc[®] Load Chart

IC-250-3D Industrial Crane



USE SINGLE PART LOAD LINE FOR LOADS TO 9000 LBS. WT. 180 LBS.  53 1/2"

USE TWO PART LOAD LINE FOR LOADS TO 18000 LBS. WT 200 LBS.  55"

USE FOUR PART LOAD LINE FOR LOADS TO 36000 LBS. WT 300 LBS.  60"

LOAD HOOKS, DOWNHAUL WEIGHTS, HOOK BLOCKS AND OTHER LOAD HANDLING DEVICES EXCEPT HOIST ROPE SHALL BE CONSIDERED PART OF THE LOAD.

CAPACITIES ARE IN POUNDS AND APPLY TO OPERATION ON FIRM LEVEL SURFACE

LOAD RADIUS FEET	MAIN BOOM		MAIN BOOM OR BOOM EXTENSION		
	ON RUBBER 360° ROTATION	ON RUBBER OVER FRONT	O/R'S IN & DOWN 360° ROTATION	O/R'S IN & DOWN OVER FRONT	O/R'S OUT & DOWN 360° ROTATION
6	16400	18500	30000	36000	36000
8	13000	15000	25000	30400	30400
10	10800	12350	20300	25000	25000
12	9000	10450	15500	20800	20800
14	7550	9000	11500	18700	18700
16	6450	7800	9000	16700	16700
18	5600	6850	7500	14900	14900
20	4800	6100	6400	13500	13500
22	4150	5400	5500	12100	12100
24	3600	4650	4800	10900	10900
26	3100	4000	4100	9850	9850
28	2700	3500	3500	8950	8950
30	2350	3050	3050	8200	8200
32	2000	2650	2650	7500	7500
34	1750	2300	2300	7150	7000
38	1300	1750	1750	5950	5650
42	900	1400	1300	5000	4700
46	600	1100	1000	4250	4000
50	350	900	700	3650	3400
54	---	---	---	---	3550
58	---	---	---	---	3100
62	---	---	---	---	2700
66	---	---	---	---	2350
70	---	---	---	---	2100

BOOM EXT. OFFSET ANGLE	BOOM EXTENSION - STRAIGHT OR OFFSET MAIN BOOM ANGLE						
	0°	15°	30°	40°	50°	60°	70°
0°	2600	2750	3000	3400	4100	5100	6200
15°	---	2500	2600	2700	2900	3300	4300
30°	---	---	2300	2400	2500	2700	3200

LOAD RADIUS IS THE HORIZONTAL DISTANCE FROM THE CENTER OF ROTATION OF THE UNLOADED CRANE TO THE VERTICAL LOAD LINE WITH THE LOAD APPLIED.
EXCEEDING CAPACITY RATINGS OR APPLYING SIDE LOADS TO THE BOOM OR BOOM EXTENSION IS MISUSE, IS HAZARDOUS, AND VOIDS WARRANTY.
CAUTION: BOOM EXTENSION LOADS MUST NOT EXCEED MAIN BOOM CAPACITY. BOOM EXTENSION MAY ONLY CARRY LOADS WITH OUTRIGGERS DOWN.

CAPACITIES ON OUTRIGGERS OUT & DOWN ARE 85% OF TIPPING LOADS. CAPACITIES ON RUBBER ARE 75% OF TIPPING LOADS. CAPACITIES ON IN & DOWN OUTRIGGERS ARE LESS THAN 85% OF TIPPING LOADS. CAPACITIES BELOW BOLD LINE ARE LIMITED BY TIPPING. OTHER CAPACITIES ARE LIMITED BY STRUCTURAL OR HYDRAULIC CAPABILITY.

DECK CAPACITY 17000 LBS. WITH EMPTY BOOM RETRACTED OVER FRONT. DECK LOAD MUST BE CENTERED BEHIND FRONT AXLE. SPEED MUST BE LESS THAN 2 MPH. MAXIMUM TRAVEL 200 FT. IN 30 MINUTES ON SMOOTH PAVEMENT.

PICK AND CARRY WITH THE SHORTEST PRACTICAL BOOM, CENTERED OVER THE FRONT. OPERATE WITH BOOM AS LOW AS POSSIBLE WITH THE LOAD CLOSE TO THE GROUND. PICK AND CARRY CAPACITIES ARE FOR SMOOTH, LEVEL PAVED SURFACE.

THE BOOMS ON THIS UNIT ARE ALL STEEL AND HAVE NO LINE VOLTAGE RATING - NO ELECTRICAL INSULATION VALUE.

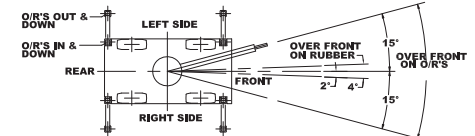
MAXIMUM HYDRAULIC PRESSURE 3000 PSI.

BOOM EXTENSION DEDUCT 500 LBS. WHEN STOWED ON BASE BOOM.

ENSURE ANTI-TWO-BLOCK SWITCH IS FUNCTIONAL AFTER DEPLOYING OR STOWING BOOM EXTENSION.

OPERATION

1. READ AND UNDERSTAND OPERATION MANUAL BEFORE OPERATING CRANE.
2. CHECK LEVEL OF HYDRAULIC OIL AND ENGINE OIL DAILY.
3. CHECK UNIT FOR VISIBLE DEFECTS AND LOOSE PARTS.
4. SET VEHICLE PARK BRAKE SECURELY.
5. EXTEND OUTRIGGERS TO SOLID FOOTING AND LEVEL CRANE.
6. OPERATE ALL HYDRAULIC CONTROLS SLOWLY AND SMOOTHLY. AVOID SUDDEN STOPS AND STARTS.



THE LOAD HOIST LINE ON THIS UNIT MUST BE 9/16\" DIA. 6 X 36-EIP-RRJ-WRC WIRE ROPE (OR EQUIVALENT) WITH A MINIMUM BREAKING STRENGTH OF 31,500 LBS.

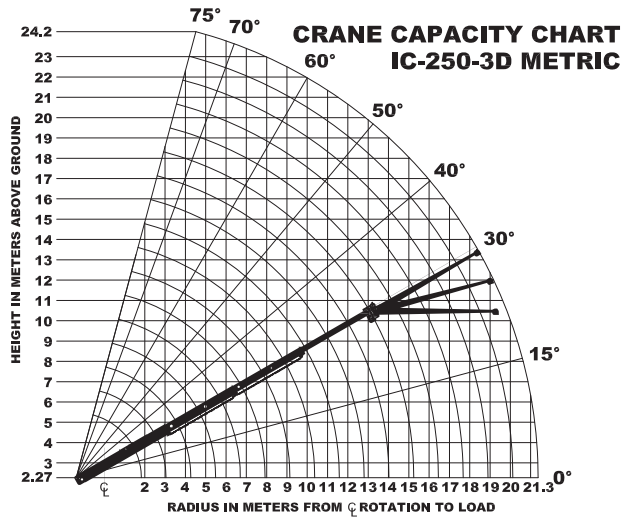
APPROVED TIRES: OTR 385/65D22.5, 16 PLY - 120 PSI
TORQUE WHEEL NUTS TO 500 FT. LBS. (THESE CONDITIONS MUST BE MAINTAINED TO HANDLE RATED LOADS ON THIS CRANE.)

MODEL NO. SERIAL NO. DATE OF MFR.

IC-250-3D

BRODERSON MANUFACTURING CORP.
LENEXA, KANSAS

65400924



LOAD HOOKS, DOWNHAUL WEIGHTS, HOOK BLOCKS AND OTHER LOAD HANDLING DEVICES EXCEPT HOIST ROPE SHALL BE CONSIDERED PART OF THE LOAD.

CAPACITIES ARE IN KILOGRAMS AND APPLY TO OPERATION ON FIRM LEVEL SURFACE

LOAD RADIUS METERS	MAIN BOOM		MAIN BOOM OR BOOM EXTENSION		
	ON RUBBER 360° ROTATION	ON RUBBER OVER FRONT	O/R'S IN & DOWN 360° ROTATION	O/R'S IN & DOWN OVER FRONT	O/R'S OUT & DOWN 360° ROTATION
1.8	7440	8400	13600	16330	16330
2.0	6900	7880	12950	15600	15600
2.5	5790	6680	11120	13540	13540
3.0	4970	5680	9370	11530	11530
3.5	4280	4930	7590	9770	9770
4.0	3690	4350	5940	8890	8890
4.5	3210	3860	4690	8130	8130
5.0	2840	3440	3920	7400	7400
6.0	2230	2820	2970	6220	6220
7.0	1760	2280	2340	5210	5210
8.0	1380	1780	1820	4410	4410
9.0	1100	1430	1420	3800	3800
10.0	860	1130	1130	3330	3300
11.0	680	900	900	2960	2850
12.0	520	730	710	2540	2400
13.0	380	610	560	2210	2080
14.0	270	500	450	1930	1820
15.0	190	420	340	1700	1590
15.2	160	410	310	1650	1540
16.0	---	---	---	---	1610
17.0	---	---	---	---	1520
18.0	---	---	---	---	1360
20.0	---	---	---	---	1080
21.3	---	---	---	---	950

BOOM EXT. OFFSET ANGLE	BOOM EXTENSION CAPACITIES- STRAIGHT OR OFFSET MAIN BOOM ANGLE						
	0°	15°	30°	40°	50°	60°	75°
0°	1180	1250	1360	1540	1860	2310	2810
15°	---	1130	1180	1220	1310	1490	1950
30°	---	---	1040	1090	1130	1220	1450

LOAD RADIUS IS THE HORIZONTAL DISTANCE FROM THE CENTER OF ROTATION OF THE UNLOADED CRANE TO THE VERTICAL LOAD LINE WITH THE LOAD APPLIED.

EXCEEDING CAPACITY RATINGS OR APPLYING SIDE LOADS TO THE BOOM OR BOOM EXTENSION IS MISUSE, IS HAZARDOUS, AND VOIDS WARRANTY.

CAUTION: BOOM EXTENSION LOADS MUST NOT EXCEED MAIN BOOM CAPACITY. BOOM EXTENSION MAY ONLY CARRY LOADS WITH OUTRIGGERS DOWN.

CAPACITIES ON OUTRIGGERS OUT & DOWN ARE 85% OF TIPPING LOADS. CAPACITIES ON RUBBER ARE 75% OF TIPPING LOADS. CAPACITIES ON IN & DOWN OUTRIGGERS ARE LESS THAN 85% OF TIPPING LOADS. CAPACITIES BELOW BOLD LINE ARE LIMITED BY TIPPING. OTHER CAPACITIES ARE LIMITED BY STRUCTURAL OR HYDRAULIC CAPABILITY.

DECK CAPACITY 7700kg WITH EMPTY BOOM RETRACTED OVER FRONT. DECK LOAD MUST BE CENTERED BEHIND FRONT AXLE. SPEED MUST BE LESS THAN 3.2 km/h. MAXIMUM TRAVEL 60 m IN 30 MINUTES ON SMOOTH PAVEMENT.

PICK AND CARRY WITH THE SHORTEST PRACTICAL BOOM, CENTERED OVER THE FRONT. OPERATE WITH BOOM AS LOW AS POSSIBLE WITH THE LOAD CLOSE TO THE GROUND. PICK AND CARRY CAPACITIES ARE FOR SMOOTH, LEVEL PAVED SURFACE.

THE BOOMS ON THIS UNIT ARE ALL STEEL AND HAVE NO LINE VOLTAGE RATING - NO ELECTRICAL INSULATION VALUE.

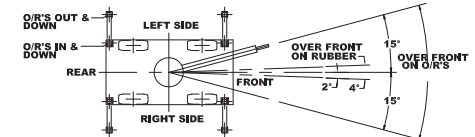
MAXIMUM HYDRAULIC PRESSURE 207 BAR

BOOM EXTENSION DEDUCT 220 kg WHEN STOWED ON BASE BOOM.

ENSURE ANTI-TWO-BLOCK SWITCH IS FUNCTIONAL AFTER DEPLOYING OR STOWING BOOM EXTENSION.

OPERATION:

1. READ AND UNDERSTAND OPERATION MANUAL BEFORE OPERATING CRANE.
2. CHECK LEVEL OF HYDRAULIC OIL AND ENGINE OIL DAILY.
3. CHECK UNIT FOR VISIBLE DEFECTS AND LOOSE PARTS.
4. SET VEHICLE PARK BRAKE SECURELY.
5. EXTEND OUTRIGGERS TO SOLID FOOTING AND LEVEL CRANE.
6. OPERATE ALL HYDRAULIC CONTROLS SLOWLY AND SMOOTHLY. AVOID SUDDEN STOPS AND STARTS.



THE LOAD HOIST LINE ON THIS UNIT MUST BE 14.3 mm DIA. 6 X 36-EIP-RRL-IWRC WIRE ROPE (OR EQUIVALENT) WITH A MINIMUM BREAKING STRENGTH OF 140 kN.

APPROVED TIRES: OTR 385/65D22.5, 16 PLY - 825 kPa TORQUE WHEEL NUTS TO 680 Nm (THESE CONDITIONS MUST BE MAINTAINED TO HANDLE RATED LOADS ON THIS CRANE.)

MODEL NO. SERIAL NO. DATE OF MFR.

IC-250-3D		
------------------	--	--

BRODERSON MANUFACTURING CORP.
LENEXA, KANSAS

65400930