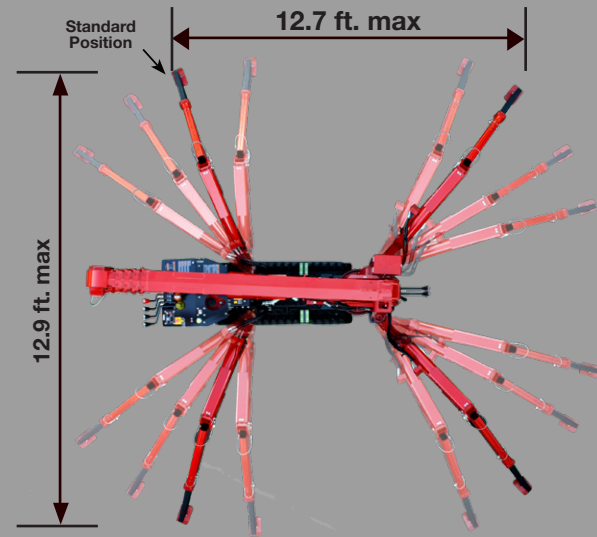




- Only 24" wide
- Full-function wireless radio remote controls
- Centrally located infinite variable controls - Automatic throttle
- Onboard self-diagnostic computer system
- Anti-two block system
- Hexagonal boom design with 31 ft. tip height (37 ft with jib)
- Automatic hook stow system
- UNIC patented outrigger overturn monitoring system to allow 52 outrigger configurations.
- 360 Degree continuous rotation



OUTRIGGERS MINIMUM OUTRIGGERS MAXIMUM

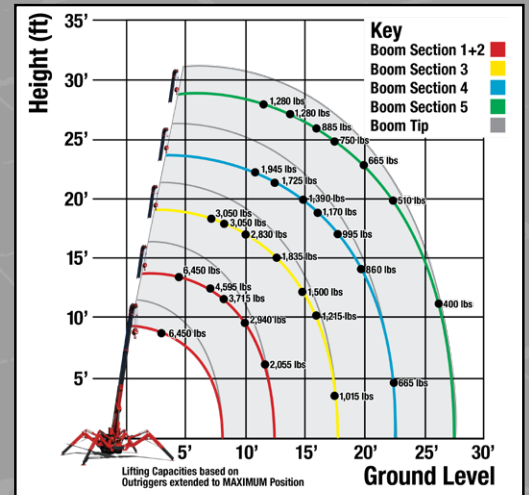


LOAD CHART

Lifting capacity varies depending on outrigger configuration and boom length and angle.

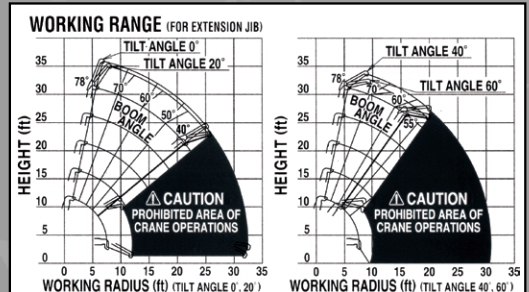
BOOM SECTION 1 EXTENDED BOOM SECTION 1 + 2 EXTENDED									
Working Radius (ft.)	3	4.5	5	6	7	8	10	11	12.58
Outriggers Maximum (lbs.)	6,450	6,450	5,850	4,950	4,350	3,800	2,850	2,450	2,000
Outriggers Minimum (lbs.)	4,450	4,450	4,450	3,150	2,250	1,600	1,100	950	600
BOOM SECTION 1 + 2 + 3 EXTENDED									
Working Radius (ft.)	7	8	9	10	11	12	14	15	17.62
Outriggers Maximum (lbs.)	3,050	3,050	3,050	2,750	2,450	2,150	1,650	1,450	1,000
Outriggers Minimum (lbs.)	1,850	1,550	1,250	1,150	1,000	850	600	550	300
BOOM SECTION 1 + 2 + 3 + 4 EXTENDED									
Working Radius (ft.)	11	12.5	13	15	16	17	18	20	22.61
Outriggers Maximum (lbs.)	1,950	1,950	1,750	1,350	1,200	1,100	1,000	850	660
Outriggers Minimum (lbs.)	1,000	800	750	600	510	450	370	280	200
BOOM SECTION 1 + 2 + 3 + 4 + 5 EXTENDED									
Working Radius (ft.)	12.5	13.5	15	16	18	19	21	23	27.59
Outriggers Maximum (lbs.)	1,280	1,280	1,050	920	750	700	590	500	440
Outriggers Minimum (lbs.)	850	700	600	530	420	380	300	220	130

WORKING RADIUS



Rated Load for Extension Jib in lbs.

1st TO 4th BOOM SECTIONS												
Boom Angle	78°	75°	70°	65°	60°	55°	50°	40°	30°	20°	10°	0°
Tilt Angle 0°	1,580	1,580	1,580	1,140	810	590	590	PROHIBITED AREA OF CRANE OPERATIONS				
20°	1,580	1,580	1,580	1,140	810	590	590					
40°	1,580	1,580	1,580	1,140	810							
60°	1,580	1,580	1,580	1,140	810							
5th BOOM SECTION ONLY												
Boom Angle	78°	75°	70°	65°	60°	55°	50°	40°	30°	20°	10°	0°
Tilt Angle 0°	920	920	920	590	480	370	260	PROHIBITED AREA OF CRANE OPERATIONS				
20°	920	920	920	590	480	370	260					
40°	920	920	920	590	480							
60°	920	920	920	590	480							



Rated Load for Searcher Hook in lbs.

1st TO 4th BOOM SECTIONS											
Working Radius (ft.)	12.5	13	15	16	18	20	21	23	26	27.5	
Outriggers Maximum (lbs.)	1,560	1,560	1,060	940	740	570	520	410	310	240	
Outriggers Minimum (lbs.)	560	460	330	280	190	120	110	PROHIBITED AREA OF CRANE OPERATIONS			
5th BOOM SECTION ONLY											
Working Radius (ft.)	12.5	13	15	16	18	20	21	23	26	30	32.5
Outriggers Maximum (lbs.)	1,120	1,010	870	740	670	570	510	410	310	220	130
Outriggers Minimum (lbs.)	560	460	330	280	190	120	110	PROHIBITED AREA OF CRANE OPERATIONS			

1 Part line - 1,630 lbs | 2 Part line - 3,260 lbs | 3 Part line - 4,890 lbs | 4 Part line - 6,450 lbs