

STERLING CRANE

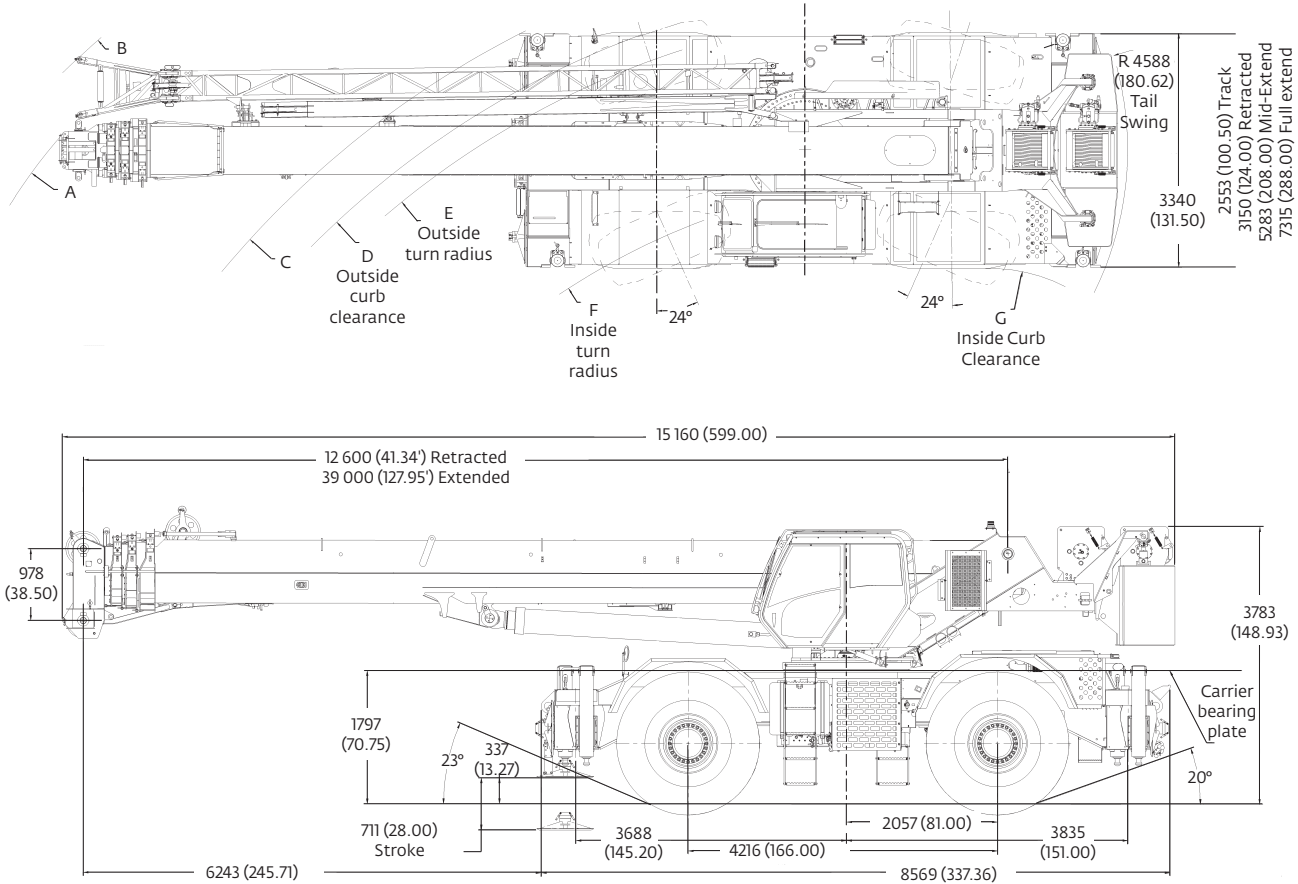


TRANSPORTATION SPECS - Rough Terrain Cranes

GROVE MODEL RT880E - 80 TON CAPACITY

Dimensions

Tire size	A	B	C	D	E	F	G	A	B	C	D	E	F	G
29.5 X 25	16.6 m (54.5')	17.2 m (56.4')	13.6 m (44.7')	12.9 m (42.4')	12.5 m (41.0')	12.5 m (33.2')	8.8 m (28.8')	11.1 m (36.5')	11.6 m (38.1')	8.4 m (28.0')	7.8 m (25.7')	7.3 m (24.0')	4.9 m (16.2')	4.1 m (13.5')
2 Wheel Steer							4 Wheel Steer							



All dimensions are in mm (in)

Weights

	G.V.W.		Front		Rear	
	kg	lb	kg	lb	kg	lb
Basic Machine: Including 39, 0 m (128 ft) main boom, main and aux. hoist with 182,8 m (600 ft) of rope, manual offsettable bifold swingaway, full counterweight, 9,1 t (10 USt) headache ball, and 75 t (80 USt) hook block, air conditioning, aux. nose:	49 911	110,032	24 567	54,160	25 344	55,872
Remove: Counterweight and aux. hoist (manual offsettable S/A)	9 160	20,193	4 375	9,646	13 435	29,839
Crane weight	40 751	89,839	28 942	63,806	11 909	26,033
Remove: Counterweight, aux. hoist, and manual offsettable S/A	1 200	2,645	2 158	4,758	958	2113
Crane Weight	39 551	87,194	26 784	59,048	12 767	28,146